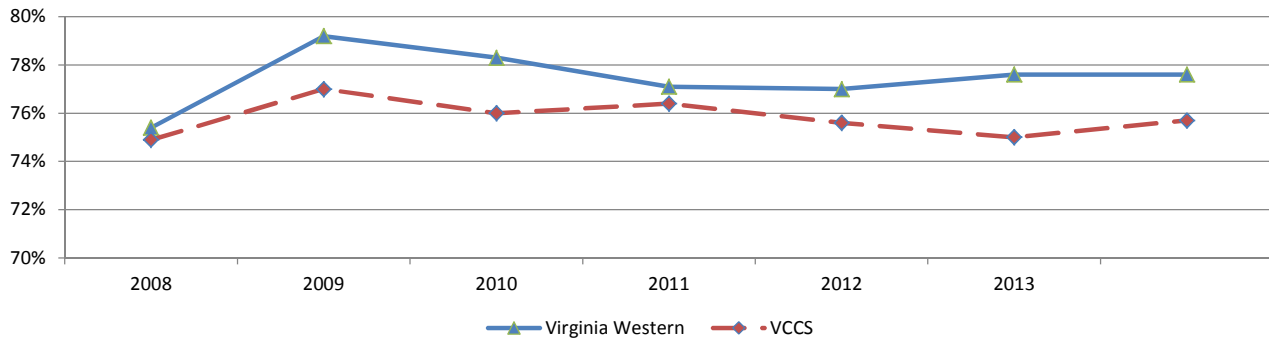


Fall-to-Spring Retention: First-Time Curricular

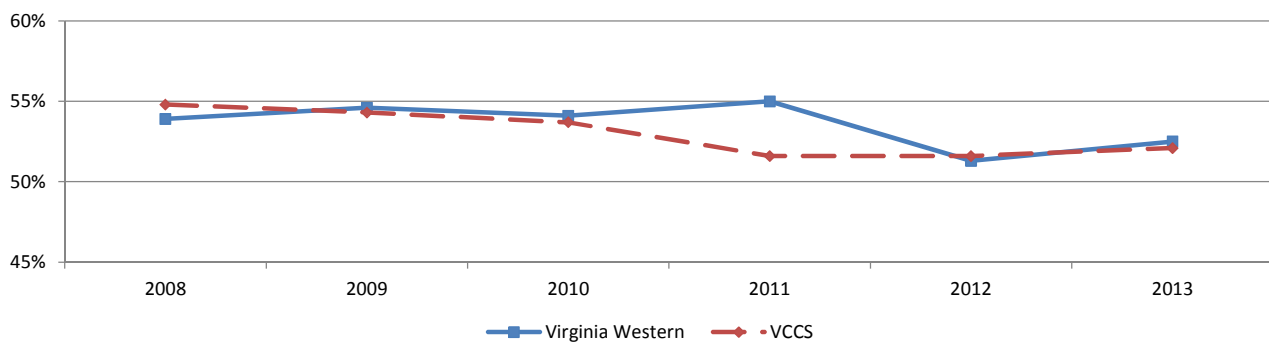


% of First-Time Curricular Students returning the following Spring:

Initially Enrolled in fall of:	2008	2009	2010	2011	2012	2013	2014
Virginia Western	75.4%	79.2%	78.3%	77.1%	77.0%	77.6%	77.6%
VCCS	74.9%	77.0%	76.0%	76.4%	75.6%	75.0%	75.7%

** Page Break **

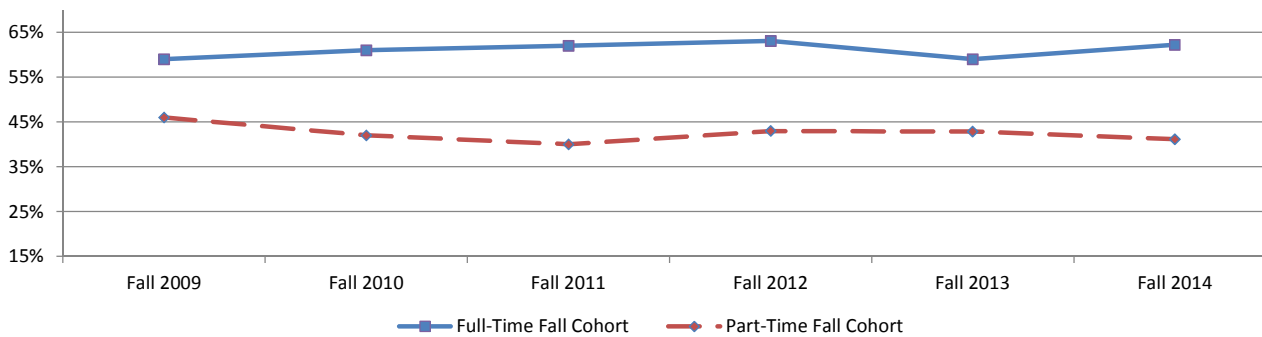
Fall-to-Fall Retention: First-Time Curricular



% of First-Time Curricular Students returning the following Fall:

Initially Enrolled in fall of:	2008	2009	2010	2011	2012	2013	2014
Virginia Western	53.9%	54.6%	54.1%	55.0%	51.3%	52.5%	
VCCS	54.8%	54.3%	53.7%	51.6%	51.6%	52.1%	

Cohort Fall-to-Fall Retention Percentages



Cohort Fall to Fall Retention (one academic year)

This table provides data in accordance with certain provisions of HEA 485 (a)(1)(U). This federal mandate was designed to provide public access to comparable information from different colleges.

** For community colleges, this table is a LIMITED representation.

Less than half of Virginia Western's incoming students are included in these figures.

Full-Time Fall Cohort							
Initial Headcount as of:	Fall 2008	Fall 2009	Fall 2010	Fall 2011	Fall 2012	Fall 2013	Fall 2014
Initial Headcount	870	935	891	782	844	1,056	975
Returned for Term:	Fall 2009	Fall 2010	Fall 2011	Fall 2012	Fall 2013	Fall 2014	Fall 2015
# Returning	513	570	552	493	498	657	
% Retention	59%	61%	62%	63%	59%	62%	
<i>Comparison: All Virginia Community Colleges</i>	63%	62%	62%	61%	63%		
Part-Time Fall Cohort							
Initial Headcount as of:	Fall 2008	Fall 2009	Fall 2010	Fall 2011	Fall 2012	Fall 2013	Fall 2014
Initial Headcount	413	405	400	377	401	379	404
Returned for Term:	Fall 2009	Fall 2010	Fall 2011	Fall 2012	Fall 2013	Fall 2014	Fall 2015
# Returning	190	170	160	162	172	156	
% Retention	46%	42%	40%	43%	43%	41%	
<i>Comparison: All Virginia Community Colleges</i>	44%	43%	43%	41%	40%		
"Cohort" includes only first-time students entering during the fall term. It also includes first time prior summer students who returned in Fall, or those who have been dual enrolled in the previous 4 years, BUT not currently dual enrolled.							
IPEDS Full-Time Cohort as a percent of:	Fall 2008	Fall 2009	Fall 2010	Fall 2011	Fall 2012	Fall 2013	Fall 2014
All entering students	50%	50%	50%	50%	48%	57%	
Total enrollment	10%	10%	9%	9%	10%	12%	

Source: Integrated Postsecondary Education Data System (IPEDS)

*Tentative